

Let's Explore the Tundra



Early Learning Child Care
Department of Education
Government of Nunavut
PO Box 1000, Station 960
Iqaluit, NU X0A 0H0
© 2022 Government of Nunavut

Illustrations by Ali Hinch © 2022 Government of Nunavut

ISBN: 978-0-2287-0935-0

This book belongs to:



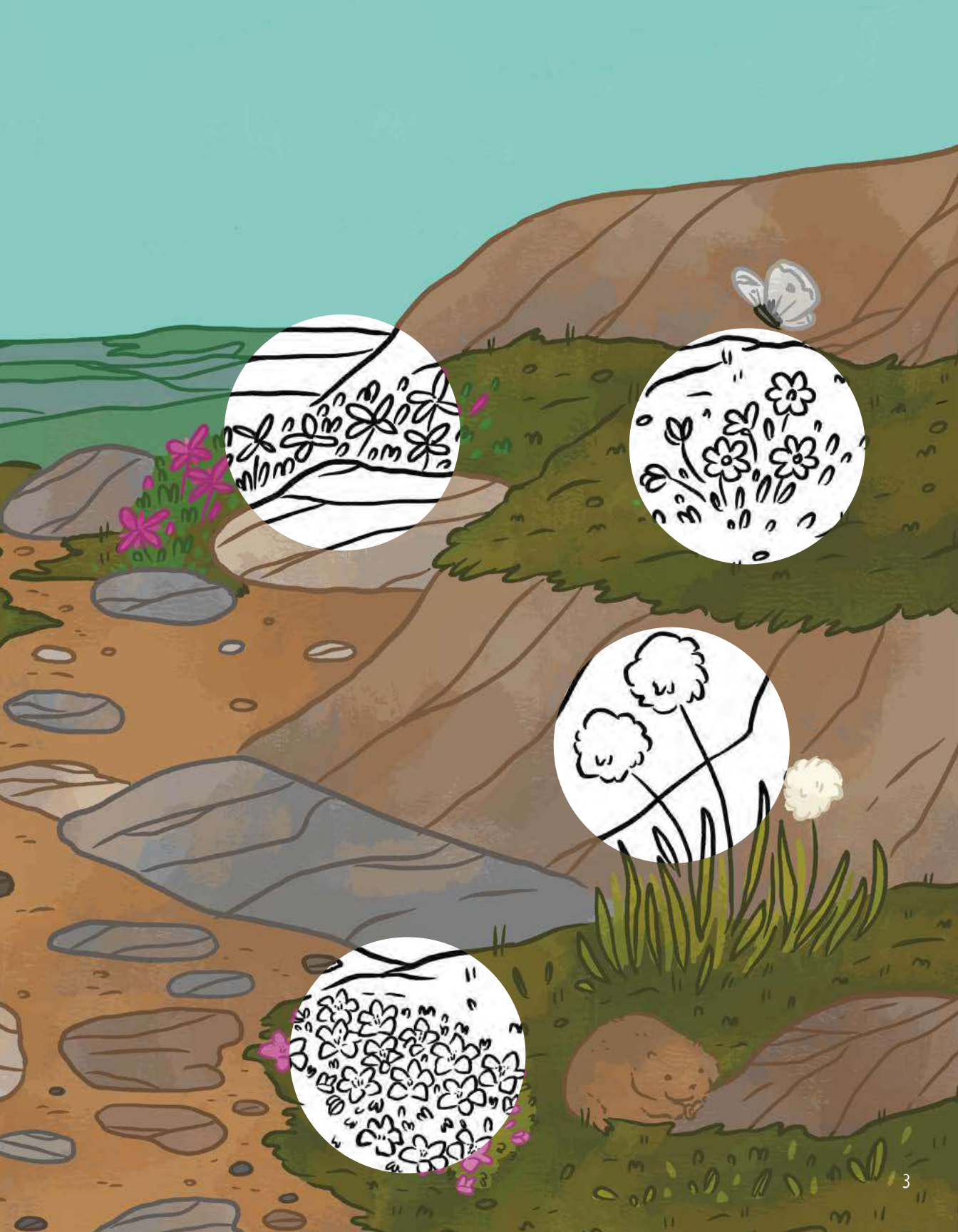
What grows on the tundra?

There are many plants that grow in Nunavut.

Turn to the sticker pages in the middle of the book. Match the plant stickers with where they belong in the tundra scene. Add the stickers to the tundra scene.

Point to each plant and say its name.





What insects and spiders live in Nunavut?

There are many insects and spiders that live in Nunavut.

Turn to the sticker pages in the middle of the book. Find the stickers that match the pictures in the tundra scene. Add the stickers to the tundra scene.

Point to each insect and spider and say its name.





What berries can I find on the land?

Many berries grow in Nunavut. Draw a line to match the berry with the plant it grows on.

Point to each kind of berry and try saying its name.



Crowberry



Blueberry



Cranberry



Cloudberry



Blueberry



Cloudberry



Cranberry



Crowberry

What do we use plants for?

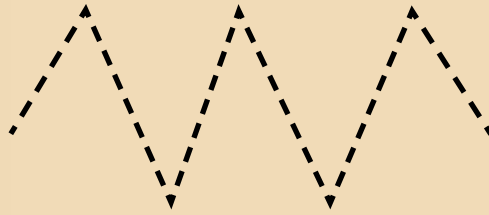
Different plants have different uses.

Follow the dotted lines to connect the plants with how they can be used.

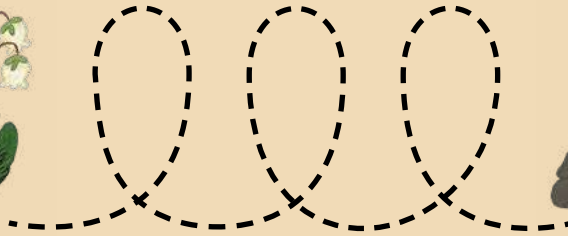
Point to each plant and say its name.



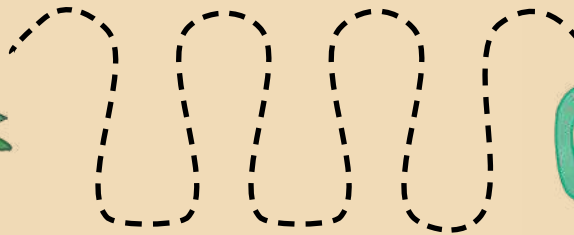
Arctic cotton



Arctic heather



Labrador tea

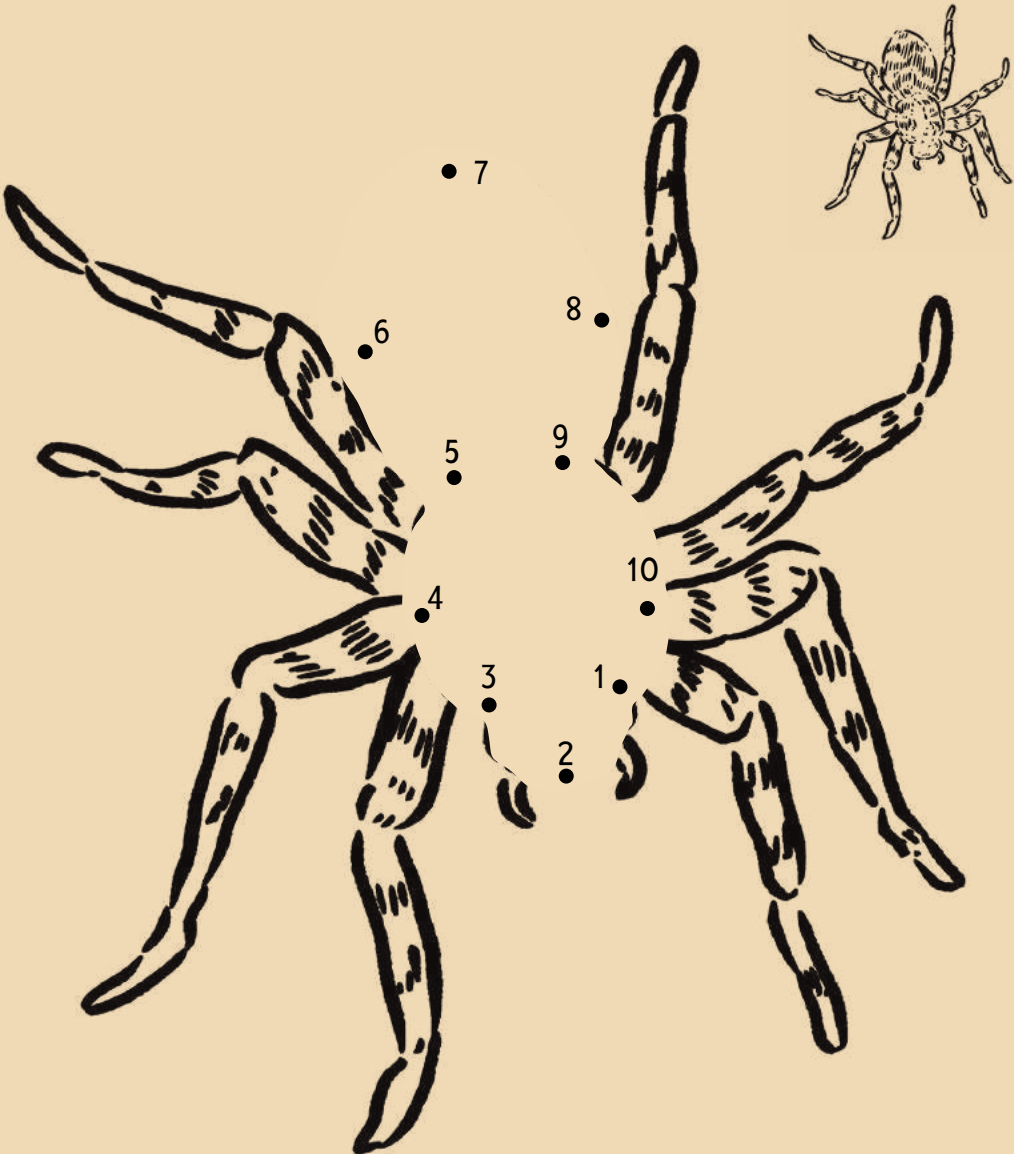


Where is the wolf spider?

Wolf spiders are hard to spot. Their dark colour blends in with the tundra.

Connect the numbers from 1 to 10 below. Do you see the wolf spider now?

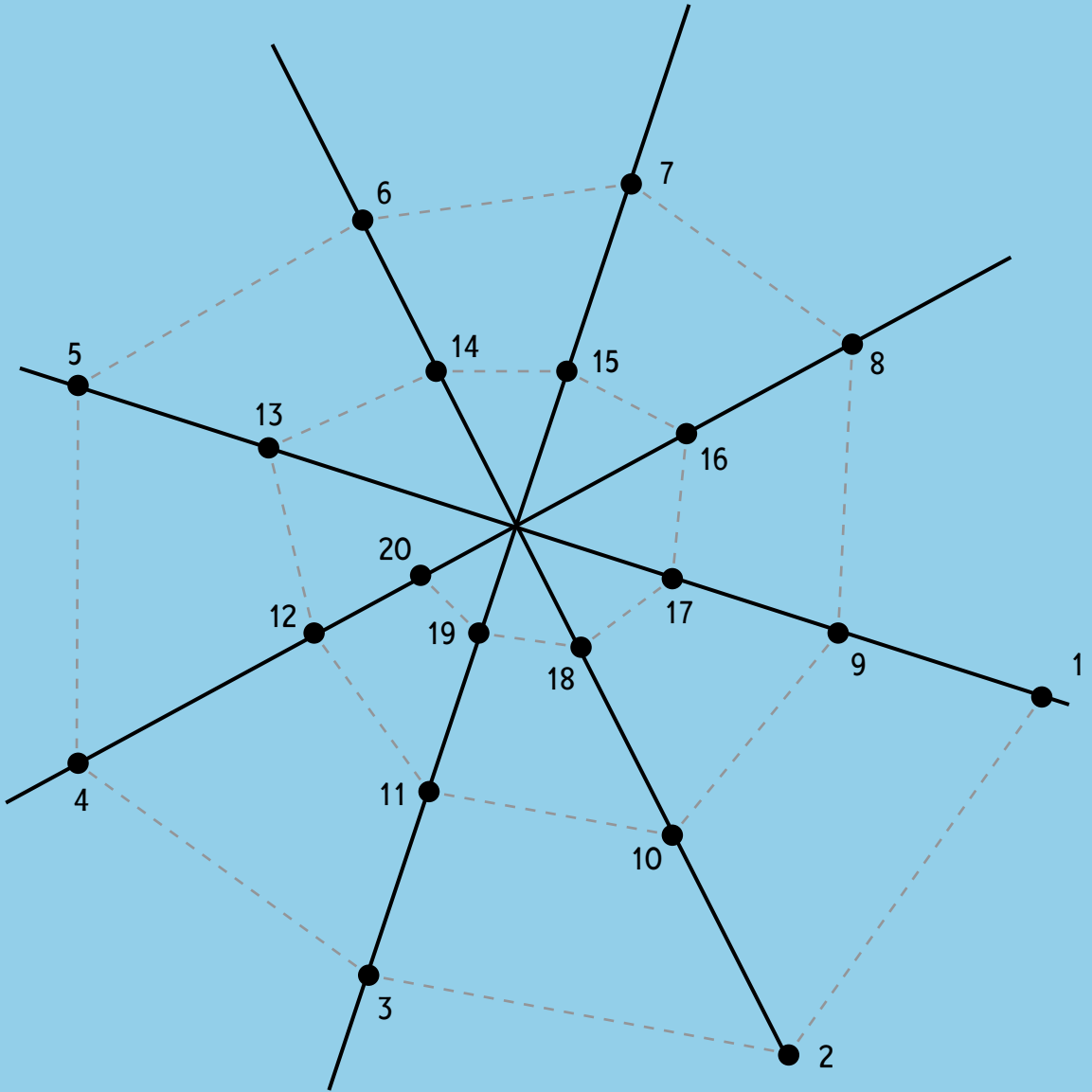
Colour the wolf spider. Help the spider camouflage with the tundra.



Can you help the spider?

Some spiders build a web to trap their food.

Connect the dots from 1 to 20 to help the sheet web spider build its web.



Can you help the bee?

Bees are very busy. They work hard to collect pollen. This helps flowers grow.

Can you help this bee collect pollen and bring it back to its nest?

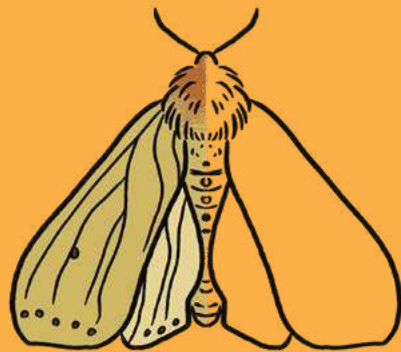


Can you complete the butterflies and moths?

Butterflies and moths come in different shapes, sizes, and colours.

Turn to the sticker pages in the middle of the book. Complete each butterfly and moth by finding the sticker with the wings that match the shape, size, and colour.

Try saying the name of each butterfly and moth.









How to tell a butterfly from a moth:

Butterflies	Moths
Fly during the day	Fly at night
Brightly coloured	Not brightly coloured

Can you find the plants and bugs?

Look closely at the picture.
Can you find these plants and bugs?

Plants	Bugs
Crowberry 	Weevil 
Arctic heather 	Wolf spider 
Arctic cotton 	Arctic bee 





Are you ready for a scavenger hunt?

Now that you have learned about plants and bugs in Nunavut, go for a walk with your family and friends. See how many plants and bugs you can find. Check them off the list.

Bugs



Butterfly



Woolly bear caterpillar



Blackfly



Woolly bear moth



Housefly



Wolf spider



Mosquito



Sheet web spider



Arctic bee



Arctic skipper butterfly



Weevil



Arctic white butterfly

Depending on where you live you may not be able to find everything on this list.

Plants



Arctic cotton



Cranberry



Arctic heather



Blueberry



Arctic poppy



Dwarf
fireweed



Arctic willow



Mountain
avens



Crowberry



Purple
saxifrage



Cloudberry



Labrador
tea

Sticker Pages



Arctic willow



Mountain avens



Arctic poppy



Arctic cotton



Crowberry



Purple saxifrage

**Pages
2 and 3**



Arctic heather



Dwarf fireweed

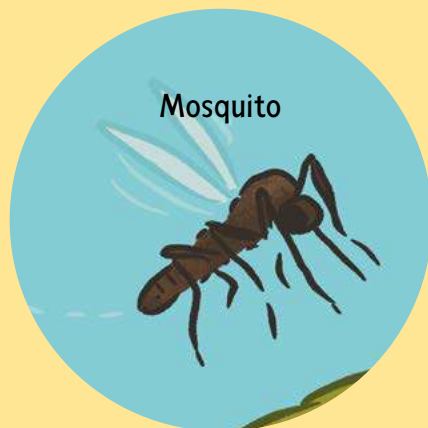
**Pages
4 and 5**



Woolly
bear moth



Housefly



Mosquito



Blackfly



