

# ᐱᓚᐅᑕᑕᑦ ᐱᓚᓗ ᐃᑕᐱᓖᓗᑦ

ᐱᓚᑦ:

---

---

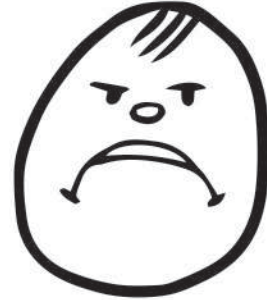
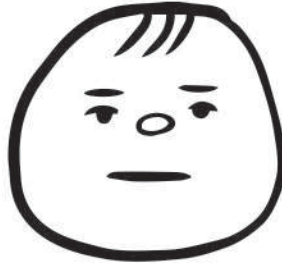
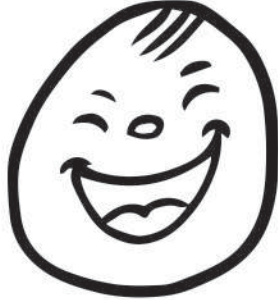
---



ᐊᑎᓃᑦ: \_\_\_\_\_

ᐅᓃᑦᑦᑦᑦᑦᑦᑦᑦ ᑭᐅᓃᓃᑎᓃᑦ

ᐊᑦᑦᑦᑦ ᑭᐅᓃᓃᑎᓃᑦ ᓃᑦᑦᑦᑦ ᐃᑦᑦᑦᑦᑦᑦᑦᑦᑦᑦᑦᑦᑦᑦᑦ ᐅᓃᑦᑦᑦᑦᑦᑦᑦᑦ.



ᑎᑎᓃᑦᑦᑦᑦ ᐱᐅᑦᑦᑦᑦᑦᑦᑦᑦᑦᑦ.

A large, empty rectangular box with rounded corners, intended for drawing or writing.

ᐊᑦᑦᑦᑦᑦᑦ ᐅᓃᑦᑦᑦᑦᑦᑦ ᑎᑎᓃᑦᑦᑦ ᐅᓃᑦᑦᑦᑦᑦᑦ.

Handwriting practice lines consisting of a solid top line, a dashed middle line, and a solid bottom line.





