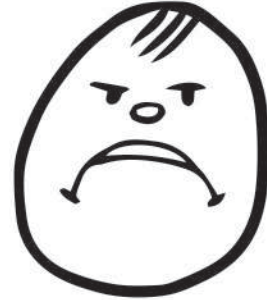
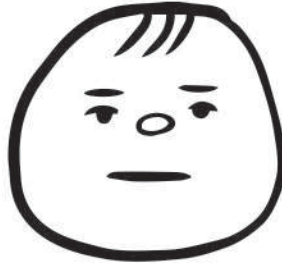
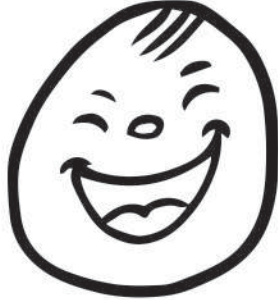


ᐊᑎᓃᑦ: _____

ᐅᓃᑦᑦᑦᑦᑦᑦᑦᑦ ᑭᐅᓃᓃᑎᓃᑦ

ᐊᑦᑦᑦᑦ ᑭᐅᓃᓃᑎᓃᑦ ᓃᑦᑦᑦᑦ ᐃᑦᑦᑦᑦᑦᑦᑦᑦᑦᑦᑦᑦᑦᑦᑦ ᐅᓃᑦᑦᑦᑦᑦᑦᑦᑦ.



ᑎᑎᓃᑦᑦᑦᑦ ᐱᐅᑦᑦᑦᑦᑦᑦᑦᑦᑦᑦ.

A large, empty rectangular box with rounded corners, intended for drawing or writing.

ᐊᑦᑦᑦᑦᑦᑦ ᐅᓃᑦᑦᑦᑦᑦᑦ ᑎᑎᓃᑦᑦᑦᑦ ᐅᓃᑦᑦᑦᑦᑦᑦ.

Handwriting practice lines consisting of a solid top line, a dashed middle line, and a solid bottom line.

